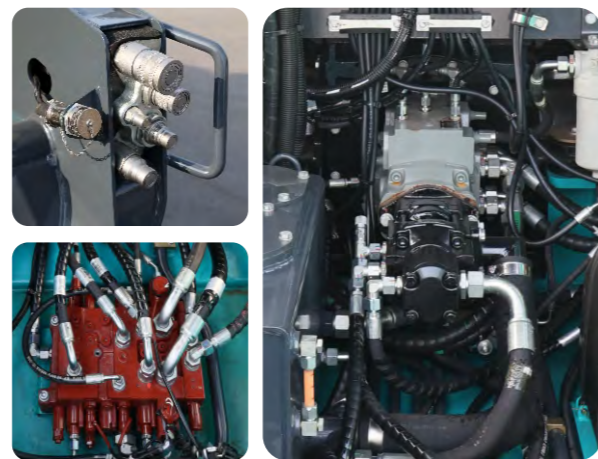


# Robust Power, Excellent Performance



Equipped with a 3.8L high-displacement turbocharged engine, it offers higher efficiency, larger torque, and minimal speed drop, featuring robust power that facilitates handling various heavy-duty conditions.

The carefully debugged hydraulic system with electronically controlled assistance combines the excellent controllability of a hydraulic system with the functionality of electronic control. Controlled by the DA valve, the main pump adopts the load-sensing principle to detect load changes in a timely manner, adjust the output of the main pump, adapt to sudden load changes, and reduce fuel consumption while preventing engine stalling. Brand new semi-electronically controlled main valve, it integrates functions of electrically controlled switch, including floating, flat lifting, and also the electric proportional function of attachments, facilitating operation. Comes standard with a high-flow attachment, with a maximum flow rate of 150L/min, it is compatible with various high-flow attachments.



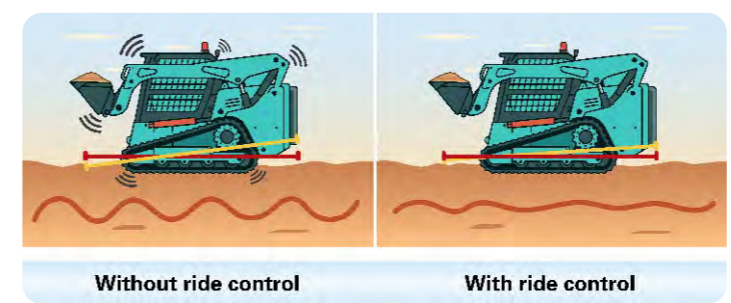
The rear-mounted hydraulic independent cooling system with temperature-controlled speed regulation achieves a perfect balance between heat dissipation and power output, enhancing cold-start capability and maximizing engine performance.



The maximum height to the bucket pin is 3360mm, which easily facilitates the loading and unloading of a lorry.



The optimized vertical lifting mechanism, with its superior vertical degree, reduces the overall machine movement during loading work, thereby increasing operational efficiency.



Equipped with ride control

- ◆ Improve the comfortability and safety of riding.
- ◆ Reduce the boom cylinder compact, prolong the service time.
- ◆ Reduce materials drop during full load of bucket, ensuring higher efficiency.
- ◆ The track remains in constant contact with the ground, facilitating steering and braking.

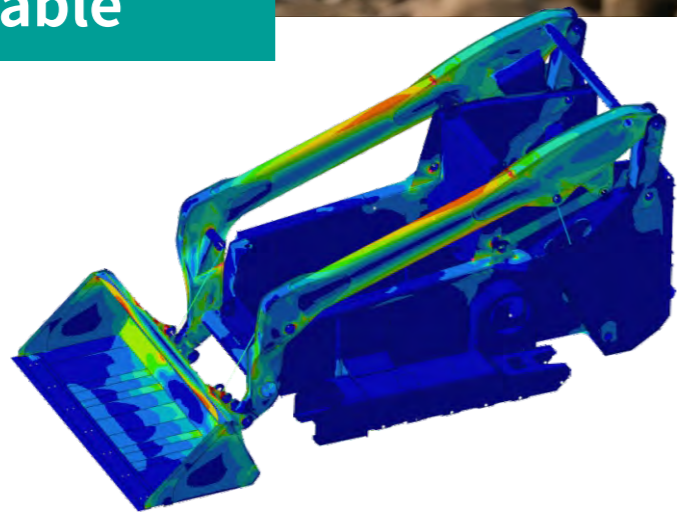


Equipped with crawl mode(SPEED MANAGEMENT)

- ◆ Capable of adjusting the travel speed over a wide range, it can achieve travel at ultra-low speeds.
- ◆ Reduce the travel efficiency, improve the output power of work devices and attachments.
- ◆ Perfectly compatible with high-power milling machines, land clearing machines, and other attachment construction operations.



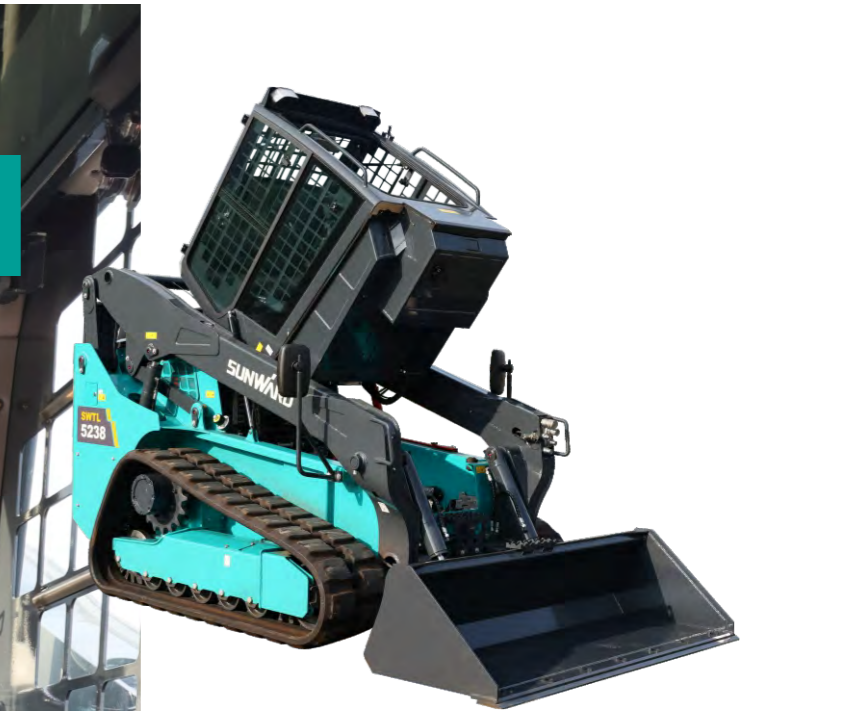
## Strengthened Structure, Reliable and Durable



- ◆ Integral welding of track frame and machine frame increases overall strength and rigidity.
- ◆ The main beam of the boom utilizes rectangular steel pipe; the left and right booms are connected using round steel pipe, which avoids welding defects and provides higher strength.
- ◆ Having passed the CAE simulation analysis, ultimate load testing, and industrial trials ensures the reliability of structural components.



## Spacious, Comfortable



The fully enclosed positive pressure cabin extremely reduces dust entering, keeping the cabin clean. It also decreases noise, reducing driver fatigue.



Innovative upward-swinging door replaces traditional side-opening door. Can be opened freely with the boom in any position, enhancing convenience and safety.



The front-five and rear-two air outlet layout reasonably distributes the airflow, ensuring excellent heating and cooling performance, which can adapt to various regional temperature environments.



## Spacious and Comfortable Cabin

### Spacious Cab:

The cab is designed to accommodate drivers of various body sizes. With its extra-large side windows, skylight, and front door, it offers an expansive view that enhances operational convenience.

### Luxurious Interior:

The interior is luxurious, featuring a brand-new control lever. Common functions are integrated into the lever buttons, and all function buttons are conveniently placed within easy reach.



The newly upgraded LCD capacitive touchscreen can display a variety of operational information, allowing you to easily monitor the machine's status. It supports diagnostic functions to promptly identify machine issues; The screen also features a built-in reverse camera, which can be set to display constantly or only when reversing; The machine offers keyless start with a password lock option for added convenience and security; A standard audio system supports multiple playback modes, including radio, Bluetooth, and USB.

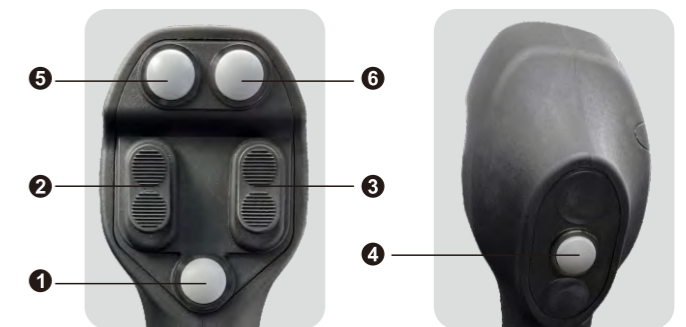


Start password setting

Customers can enable a startup password through the screen and set program locks. To operate the machine, a 6-digit password is required to start the engine. Multiple user passwords can be set, so customers don't have to worry about losing keys and being unable to start the machine.



- ① Hydraulic quick-change device
- ② Regeneration prohibition switch
- ③ Regeneration request switch
- ④ USB charging port
- ⑤ Cigarette lighter connector



Buttons instruction figure of left handle

- ① Horn
- ② AUX1
- ③ AUX2
- ④ Double speed
- ⑤ Left steering
- ⑥ Right steering



A/C

Comes standard with a heating and cooling A/C system. It is equipped with an automatic electronic hot water valve, which allows for one-touch switching between cooling and heating via the screen, eliminating the need for manual operation and providing convenience and speed.



Reverse image

A rearview camera is standard, reducing blind spots and giving the operator a clear view of the area behind the machine. The reverse camera can be automatically triggered when reversing or manually activated for constant display.

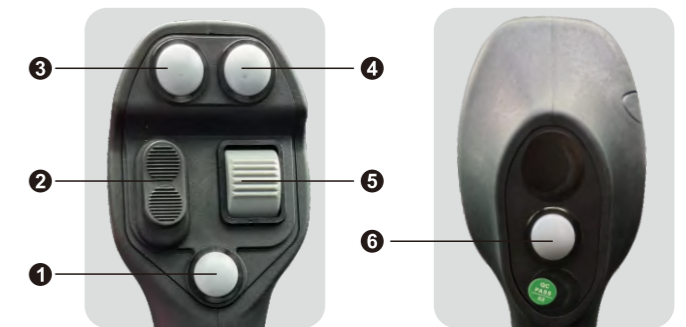


Medium

The standard radio assembly integrates radio, Bluetooth, and USB modes. You can connect your phone via Bluetooth to play music, insert a USB drive to play songs, or tune in to radio stations using the radio.



- ① Parking brake
- ② Operating pilot
- ③ Wiper
- ④ Sprayer
- ⑤ Outline light
- ⑥ Alarm light
- ⑦ Bucket leveling
- ⑧ High flow
- ⑨ Flash light for danger alarm
- ⑩ Crawl mode
- ⑪ Mute
- ⑫ Start without key
- ⑬ Emergency switch



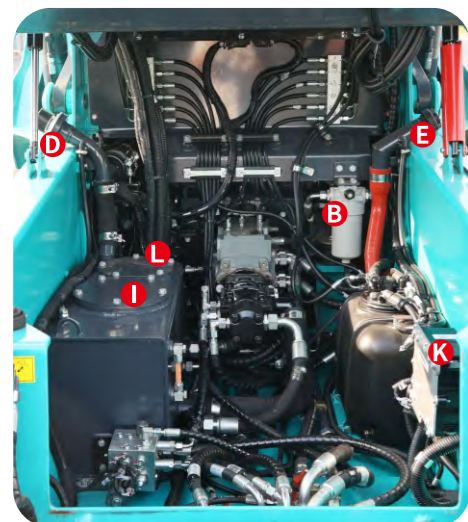
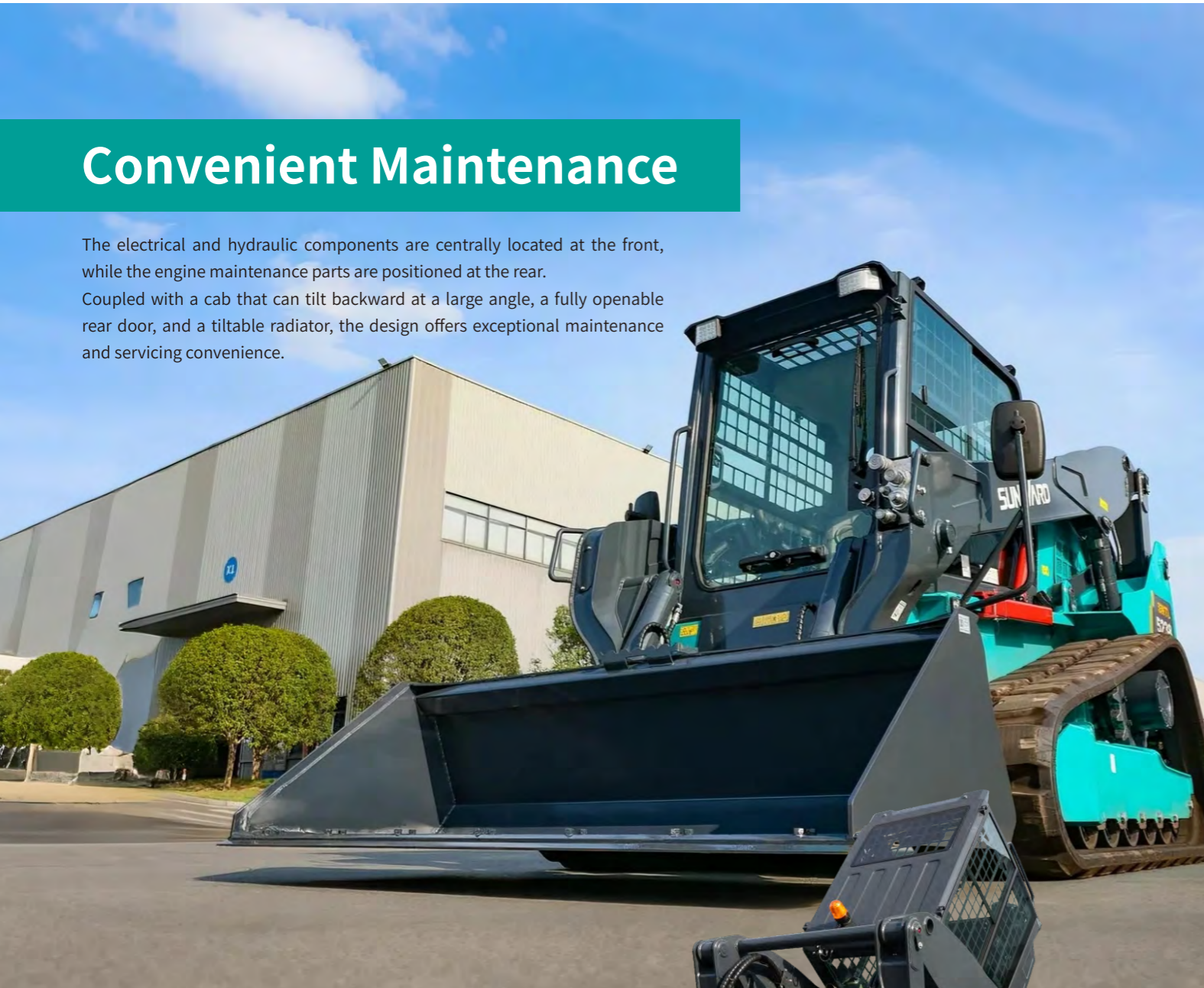
Buttons instruction figure of left handle

- ① Boom shock absorption
- ② AUX3
- ③ Attachment flow retaining (positive)
- ④ Attachment flow retaining (negative)
- ⑤ Attachment electric proportional output
- ⑥ Boom floating

# Convenient Maintenance

The electrical and hydraulic components are centrally located at the front, while the engine maintenance parts are positioned at the rear.

Coupled with a cab that can tilt backward at a large angle, a fully openable rear door, and a tiltable radiator, the design offers exceptional maintenance and servicing convenience.



- A** Air filter
- B** Hydraulic oil refilling filter
- C** Fuel inlet
- D** Hydraulic oil filling port
- E** Urea inlet
- F** Fuel filter
- G** Engine oil filter
- H** Oil-water separator
- I** Hydraulic oil inlet filter element
- J** Expansion tank
- K** Urea filter element
- L** Hydraulic oil return filter element

# Multiple Attachments

The universal quick-change connector comes standard with hydraulic quick connectors and electrical control quick connectors, capable of handling a maximum flow rate of 150L/min. It can be equipped with a variety of attachments to meet different working conditions.



Tree transplanter



Bar



Concrete mixer



Double-boom bucket



Vibrotary compactor



Grass cutter



Trencher



Land clearing machine



Enclosed sweeper



Angled sweeper



Milling machine



Manhole milling machine

# All-Round Pioneer



## TECHNICAL PARAMETERS

## SWTL5238

Operating parameters			
Overall dimensions (L×W×H)		mm	3930X2015X2110
A	Maximum operating height	mm	4270
B	Height to bucket pin	mm	3360
C	Height to cab top	mm	2110
D	Max.height to bottom of bucket(levelled)	mm	3175
E	Machine length(without bucket)	mm	3130
F	Machine length(with bucket)	mm	3930
G	Dump angle at max.height	°	43
H	Dump height	mm	2615
J	Dump reach	mm	990
K	Bucket rollback angle on ground	°	30
L	Bucket rollback angle at max.height	°	90
M	Track ground length	mm	1690
P	Ground clearance	mm	277
Q	Departure angle	°	30
R	Front turning radius(without attach.)	mm	1540
S	Front turning radius(with bucket)	mm	2385
T	Rear turning radius	mm	1875
U	Rear overhang length	mm	975
V	Track center distance	mm	1535
W	Bucket width	mm	2015

Performanc		
Operating weight	kg	5375
Load capacity	kg	1500
Tilt load	kg	4286
Max.travel speed	kph	8/12
Engine		
Brand		KUBOTA
Model		V3800-TIE5B
Type		4 cylinders,water-cooled,diesel engine
Emission standard		EPA Tier4F/EU Stage V
Power	kW/rpm	85.1/2600
Max.torque	N.m/rpm	386/1500
Hydraulic system		
Standard flow/High flow	lpm	90/150
Max.operating pressure	bar	250
Control mode		Hydraulic pilot control
Electrical system		
Starter motor	V/kW	12/3.0
Generator	V/A	12/100
Battery	Ah	180
Filling capacity		
Fuel tank	L	117
Travel configuration		
Track width	mm	450

