



PRODUCT GUIDE



Attachments designed to **maximise** excavator performance and deliver **fuel savings**.

MILLER | **SUNWARD**



CONTENTS

Page No.

YOUR WORLD CLASS MACHINES

DEMAND THE VERY BEST ATTACHMENTS

As one of the globe's largest earthmoving attachment providers, Miller designs and manufactures an extensive range of couplers and buckets built to bolster the performance and increase the reliability of your machines.



About Miller

4

Coupler Range

6

Compact Quick Hydraulic Couplers	7
Hex Quick Hydraulic Couplers	8
Compact Quick Tilting Coupler	9
Hex Quick Tilting Coupler	10
Hex Single Locking Coupler	11
Manual Coupler	12

Bucket Range

13

Bucket Specification	14	Trench Buckets	22
Bucket Application	16	Ditch Cleaning Buckets	23
Bucket Bundles	18	Rock Buckets	24
Compact Buckets	19	Extreme Rock Buckets	25
Digging Buckets	20		
Scoop Buckets	21		

Attachment Range

26

Rippers	27
---------	----

Worktool Model

28

View Your Machine Model

SWE08F	30	SWE215F	37
SWE17F/SWE18UF/SWE20F/SWE20FED	31	SWE240FE	38
SWE25UF/SWE25F	32	SWE335F	39
SWE35UF	33		
SWE50UF/ SWE60UF	34		
SWE90UF	35		
SWE155F/SWE155FW/SWE155UF	36		

Customer Support

41

Customer Support	42
How to Order	43


ATTACHMENT PARTNER OF CHOICE

With a rich heritage spanning over 47 years of delivering the most innovative couplers and buckets on the market, Miller delivers a full turnkey offering from design, engineering and manufacturing through to supply and commissioning.

Possessing an in-house team comprising the very best-in-class engineers, highly skilled fabricators and welders, and top-tier support services, this is further complemented by the company's state-of-the-art manufacturing facilities. Heavily investing in R&D and testing, Miller prides itself on being at the very forefront of the industry, constantly pushing technology boundaries in safety and efficiencies.

Known for their quality, safety and reliability, Miller's work tools are a perfect addition to Sunward's precision-built world class excavators.

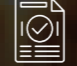
ABOUT MILLER

 **Leading Innovation Since 1978**

 **5 Global Manufacturing Facilities**

 **50+ Countries Supplied To**

 **Large Stock Availability**

 **ISO13031/AS13031 Compliant**



COUPLER RANGE

GT Series

COMPACT POWER

MAXIMUM RELIABILITY

DESIGNED TO DELIVER:

Safety

Quality

Productivity

Versatility

GTS Suitable for machines from 1-6t

Increased **Safety**

Easy to **Install**

Low **Maintenance**

Wholly cast, Miller's GTS is the lightest - yet strongest and safest - fully hydraulic coupler on the market. Enabling smaller excavators to achieve high speed connections of only 18 seconds in comparison to 20 minutes to directly mounting an attachment, the GTS allows operators to pick up the widest range of OEM attachments very easily.



FEATURES

1. Lower Offset Design

A compact, low-profile design enables machines to maintain strong breakout forces and stability, which reduces fuel consumption.

2. Front Latch

An independent, bi-directional mechanical locking system keeps the front pin engaged on smaller machines for safe, quick attachment changes.

3. Lifting Eye

An OEM-rated lifting eye for secure weight handling on compact excavators, making lifting tasks more convenient.

4. ISO Hook

A fully compliant ISO13031/AS13031 hook mechanism that acts as a mechanical fallback on small machines, protecting against any hydraulic failure.

5. Cast Frame

A uniquely curved, lightweight cast frame made from heat-treated steel, reducing overall coupler weight for minimal fuel burn and easy manoeuvrability on small excavators.

GT Series

LIGHTWEIGHT DESIGN

OPTIMISED PERFORMANCE

 Twin-lock Front and Rear

 Universal OEM Capabilities

 ISO13031/AS13031 Compliance

 3 Year Warranty or 2000 hours*
*On cast frame, internal parts are covered for 12 months.

GTX Suitable for machines from 8-50t

Extreme Performance

Easy to Install

Low Maintenance

Increase machine productivity with Miller's fully hydraulic quick coupler - the GTX - designed to transform excavators into secure and reliable multitool carriers. Delivering high speed connections, the low-profile design offers a shorter pin to point measurement to drive maximum breakout force for greater productivity and efficiency.



FEATURES

1. Lower Offset Design

A heavy-duty, low-profile design that maximises breakout force, boosting overall digging performance without compromising on strength.

2. Front Latch

An independent, bi-directional front latch incorporating a robust locking system designed to handle higher loads on large excavators, ensuring safe operation in demanding conditions.

3. Lifting Eye

A heavy-duty lifting eye rated for high-capacity loads, giving large excavators the versatility to lift and place materials with ease.

4. ISO Hydro-pneumatic Cylinder

A dual-lock cylinder system compliant with global safety standards, delivering extra fail-safe security for heavier digging and demolition attachments.

5. Cast Frame

A high-strength, curved cast frame engineered from heat-treated steel to handle substantial forces, offering durability and extended wear life for large excavators.

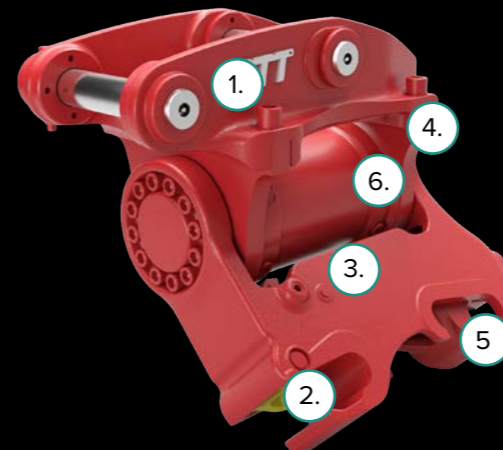
GTT Suitable for machines from 1-6t

Increased Versatility

Improved Productivity

Low Maintenance

Miller's GTT – quick hydraulic tilt coupler – delivers exceptional versatility whilst enabling fast and easy attachment changes. Achieving up to 180° of tilt rotation, operators can achieve a wide range of motion, simplifying a complex job, whilst remaining in just one position. Increasing productivity, our lightweight tilt coupler can often eliminate the need for additional specialised equipment, reducing costs.



FEATURES

1. Lower Offset Design

A low-profile design that optimises pin-to-point geometry for efficient digging and stability, even when tilting at extreme angles.

2. Front Latch

An independent, bi-directional front latch system that remains firmly locked under tilt motions, allowing operators to safely operate and detach attachments at a wide range of angles.

3. 180° Rotary Actuator

A fully integrated tilt system that provides guaranteed rotation of 180°, delivering precise angle control for grading, sloping, and finish work, without sacrificing power or torque.

4. Lifting Eye

A reliable lifting eye, ensuring safe handling of loads even when the attachment is angled.

5. ISO Hook

A self-contained ISO-certified safety mechanism that prevents attachment loss when rotating or tilting, even in the event of hydraulic failure.

6. Cast Frame

A curved, high strength cast frame that remains lightweight to support tilt functionality while providing durability for challenging tasks.



MAXIMUM UPTIME WITH FAST CHANGEOVERS

- Twin-lock Front and Rear
- Universal OEM Capabilities
- ISO13031/AS13031 Compliance
- 2 Year **Warranty** or 2000 hours*

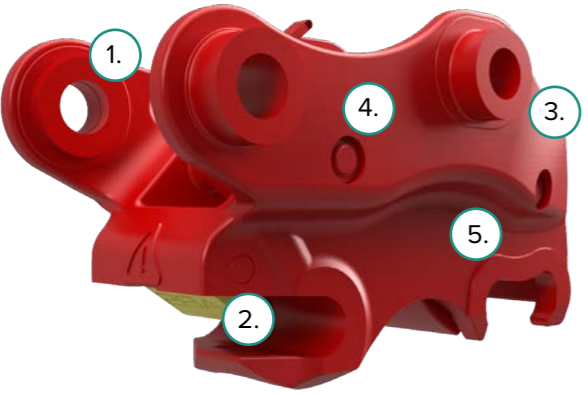
POWERLATCH Suitable for machines from 3.5-120t

Extreme **Performance**

Easy to **Install**

Low **Maintenance**

Designed to deliver safety, durability and efficiency on every job site, the Powerlatch has been engineered to withstand the toughest conditions and the most demanding workloads. Featuring a twin locking system, with a fail-safe hydraulic mechanism, operators can seamlessly pick up multiple attachments with ease.



FEATURES

- 1. Lower Offset Design**
A heavy-duty, low-profile design that maximises breakout force, boosting overall digging performance without compromising on strength.
- 2. Front Latch**
An independent, bi-directional front latch incorporating a robust locking system designed to handle higher loads on large excavators, ensuring safe operation in demanding conditions.
- 3. Lifting Eye**
A heavy-duty lifting eye rated for high-capacity loads, giving large excavators the versatility to lift and place materials with ease.
- 5. ISO Blocking Bar**
The hydraulic ISO blocking bar mechanism guarantees that attachments stay securely engaged, even in the event of total hydraulic failure, and as such is fully compliant with ISO13031/AS13031 standards.
- 5. Cast Frame**
A high-strength, curved cast frame engineered from heat-treated steel to handle substantial forces, offering durability and extended wear life for large excavators.

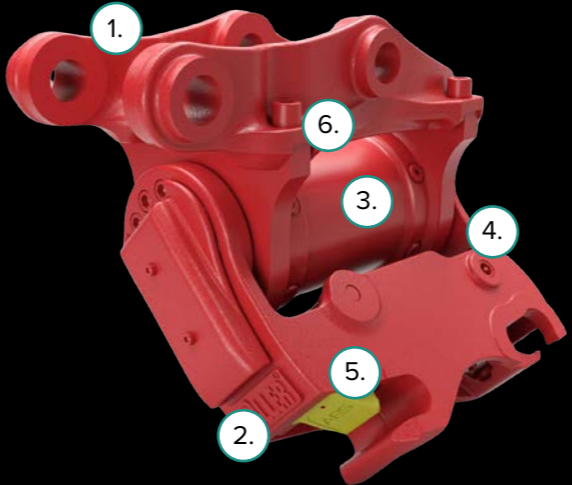
POWERLATCH TILT Suitable for machines from 3.5-20t

Increased **Versatility**

Easy to **Install**

Increased **Safety**

Offering up to 180° tilt functionality, Miller's hydraulic Powerlatch Tilt can deliver increased versatility in even the most challenging working environments. Its cast compact design with a reduced height, enables weight savings to be achieved, allowing machines to operate to their maximum performance.



FEATURES

- 1. Lower Offset Design**
The streamlined, lightweight low profile design enhances pin-to-point measurements. This improves breakout forces, driving productivity, whilst ensuring machine stability.
- 2. Front Latch**
Featuring a mechanical locking system, this ensures the front pin remains fully engaged at all times, only allowing release when in a safe orientation.
- 3. 180° Rotary Actuator**
A robust tilt actuator engineered for both mini and heavy excavators, offering up to 180° rotation in sizes up to 14t. This system ensures superior productivity and power for grading, shaping, or digging in challenging conditions.
- 4. Lifting Eye**
Specifically designed for lifting applications, the lifting eye is rated to meet OEM's safe working load limits, ensuring safe and effective weight handling.
- 5. ISO Blocking Bar**
The hydraulic ISO blocking bar mechanism guarantees that attachments stay securely engaged, even in the event of total hydraulic failure, and as such is fully compliant with ISO13031/AS13031 standards.
- 6. Cast Frame**
The unique curved, cast frame is made from high tensile strength heat treated steel, providing lightweight durability that reduces fuel consumption and enhances wear resistance.



MANUAL ATTACHMENT

CHANGES MADE EASY

MANUAL

Suitable for machines from 1-8t

Cost **Effective**

Easy to **Install**

Low **Maintenance**

Without the need for hydraulic or electrical connection to excavators, Miller's manual coupler is an ideal - and cost effective - solution allowing operators to very easily manually align and secure a wide range of attachments with their machines. Designed with fewer components, increasing reliability, the manual coupler delivers versatility and adaptability allowing operators to get the job done efficiently.



FEATURES

1. Lower Offset Design

The innovative streamlined design delivers a shorter pin to point measurement to drive maximum breakout force for greater productivity and efficiency.

2. Locking Pin

Locks the hook in place after engagement, ensuring that the attachment is held in place even under extreme loading conditions.


3. Lifting Eye

Rated to meet OEM's safe working load limits, designed for lifting applications, the lifting eye ensures safe weight handling.

4. Spring-loaded Hook

An ISO13031/AS13031 compliant system, allowing for the engagement and disengagement of the attachment to be manually activated at the coupler itself.

DESIGNED TO DELIVER:

 **Durability**

 **Performance**

 **Cutting Power**

 **Efficiency**



CHOOSING THE RIGHT DIGGING BUCKET FOR THE JOB

It is imperative to choose the right bucket - and size - for the job at hand to maximise a machines performance, increase efficiencies, whilst also maintaining the longevity of equipment.

Miller's buckets have been designed by our in-house team of world-class design engineers to allow operators to reduce cycle times and increase fill load, ultimately reducing fuel consumption. Designed and built to last, Miller has an extensive range of buckets suitable for all applications, from general groundwork through to extremely aggressive digging environments.

Below is a breakdown of the main features used on the shell of Miller buckets, applied across the different ranges depending on application:

FEATURES

1. Dual Radius Shell

The dual radius shell has been designed with maximum resistance in high wear areas with further protection from the side cutters.

2. Bottom Side Plate

The bottom side plate - a high wear area - is armoured with increased resistance using additional high wear resistant steel.

3. Side Cutter

The side cutter has been designed with an arrow-like shape allowing superior cutting through the ground.

4. External Wearbars

External wearbars prolong the lifespan of the bucket with additional protection added to high wearing locations of the bucket.

5. Internal Wearbars

Matching the steel grade of the external wearbars, this internal armour delivers extra protection when working with highly abrasive material, extending the lifespan of the bucket.

6. Edge Shrouds

Located in a high wearing area, the reversible edge shrouds section provides further protection when digging in hardened environments.

7. Heel Shrouds & Wrapper Plates

Positioned on the corners of Miller's extreme rock bucket, these wear parts protect the corners of the bucket, extending its lifespan. The heel shrouds are cast to maximise the strength the material delivers, which is the same hardness as teeth.

8. Topside Cladding

The topside cladding plate provides extra protection on the topside and the back corners of the bucket.

GENERAL PURPOSE
Example of 5t Compact

HEAVY DUTY
Example of 14t+ Heavy Duty

ROCK
Example of 14t+ Rock

EXTREME ROCK
Example of 45t Extreme Rock

MATCHING A BUCKET

FOR SITE CONDITIONS

As experts in buckets with extensive application experience, Miller has continually evolved designs to ensure all buckets deliver maximum fill capacity, whilst achieving weight savings with reinforced material in the right places.

When choosing a bucket, it is important to match the bucket to the site conditions it will be operating in to ensure maximum efficiency and durability is achieved. Using the table below, identify the material that machines will be handling and consider the type of application required, in order to determine the correct Miller spec bucket that is right for the job at hand.

BUCKET APPLICATION			
Miller Spec	Abrasion	Miller Recommended Use	Material
Heavy Duty Digging	Low	Muckshift, overburden removal, land clearance	Mud/dirt mixed with light stone
Heavy Duty Trench	Low	Narrow channelling, cabling, pipeworks	Mud/dirt mixed with light stone
Ditch Cleaning	Low	Cleaning wide trenches, loading materials, grading, dressing slopes	Mud/dirt mixed with light stone
Rock	Medium	Light quarry use, post crusher	Gravel, aggregate
Extreme Rock	High	General quarry use, loading at the face	Gypsum, limestone
Custom	Extreme	Extreme quarry use	Silica, quartz, China clay

Once the type of bucket has been identified, it is essential to match the bucket size to an excavators capacity and the density of the material that is being handled. To check the compatibility of buckets with specific machine models, visit millergroundbreaking.com/products/bucket/.

To check the compatibility of our buckets against the weight of an excavator, visit millergroundbreaking.com/product/bucket/.

Choosing the right mounting and Ground Engaging Tools (GET) for buckets is an important factor when it comes to maximising the efficiency of projects, whilst also minimising wear to reduce unnecessary maintenance costs.

Different jobs will require different GET. The type of material being handled should be taken into consideration, as well as options that are most compatible with each machine.

MOUNTING OPTIONS

Universal Arms

Designed to suit any coupler, Miller's universal arms are compatible with all brands. This mounting option provides full peace of mind increasing a fleet's versatility.

Direct Mount

With the ability to directly mount the bucket to the boom, this option delivers the shortest tip radius, maximising machine productivity. This is an ideal solution when a machine is dedicated to one application, such as mass excavation.

Scoop

Integrated bucket pins with the innovative scoop mounting option, reduces the pin to point dimension, allowing for more materials to be dug, faster and with improved machine cycles.

GET OPTIONS

Bolt on Edge

Miller manufactures its own bolt on edge systems designed to create a perfect flat finish and avoid contact with pipes and cables whilst digging or profiling.

Weld on Edge

This system offers the best of both worlds with a smooth finish achieved with the blade and added digging capabilities delivered from the teeth.

Bolt on Light Duty Teeth

Standard reinforced teeth, commonly used on compact machines, designed for general digging and loading applications.

Weld on Heavy Duty Teeth

Designed for long wear life and to perform tasks that require high penetration, Miller's buckets can be supplied with either CAT type or OEM teeth.

Weld on Rock Teeth

Made for hard terrains, rock teeth are typically applied to 45t+ buckets and are designed for high performance in aggressive conditions.

PRECISION TOOLS

FOR EVERY JOB

Convenient

Cost Saving

Hassle Free

Easy to Store

BUNDLES

Suitable for machines from 1-20t

READY TO DIG BUNDLE OPTIONS

- > Compact (1-6t)
- > Hex (8-50t)
- > Utility (1-6t)
- > Tilt (1-6t)

To make it easier for dealers, attachment bundles are a great choice. Easy to store and compactly packaged, these bundles - comprising a quick hydraulic coupler and a set of buckets often used in conjunction by operators - are a more cost-effective package for customers when bought together.

Each bundle includes:



1 QUICK COUPLER

1 DIGGING BUCKET

1 TRENCH BUCKET

1 DITCH CLEANING BUCKET

COMPACT

Suitable for machines from 1-6t



DITCH CLEANING:

DIGGING:

TRENCH:

TILT:

RECOMMENDED USE

Low abrasive excavation ●

●●● Cleaning wide trenches, loading materials, grading, dressing slopes

●●● Muckshift, overburden removal and land clearance

●●● Narrow channeling, cabling, pipe works

●●● Hard to reach angles and tight spaces with the capability to tilt laterally 45°

MOUNTING OPTIONS



Universal Arms (1-6t)



Universal Arms (1-6t)



Universal Arms (1-6t)



Universal Arms (1-6t)

GET OPTIONS



Bolt on Edge (1-6t)



Bolt on Light Duty Teeth (1-6t)



Bolt on Edge (1-6t)



Bolt on Light Duty Teeth (1-6t)



Bolt on Edge (1-6t)



Bolt on Edge (1-6t)

INNOVATIVE DESIGN

MAXIMUM EFFICIENCIES

 **Robust & Hardwearing**

 **Achieves Fuel Savings**

 **12 Month Warranty***
*T&C's apply

HEAVY DUTY DIGGING

Suitable for machines from 8-95t

Ideal for handling larger loads, Miller's heavy duty digging buckets - optimised in weight and capacity - have been designed to achieve maximum breakout force, withstanding 100% machine force to provide greater machine stability.



Reinforced Design

The unique dual radius design - with large fill capacity capabilities - allows increased fill capacity with zero tail drag, reducing maintenance costs.

Increased Strength

Reinforced with optimised thickness and grades of steel in additional high wear areas, increases performance, whilst extending the lifespan of the bucket.



Minimal Resistance

Featuring side cutters, this enhances digging capabilities by minimising resistance when cutting through the ground, increasing an excavator's digging power.






RECOMMENDED USE

- **Low abrasive excavation**
- **Muckshift, overburden removal and land clearance.**

MOUNTING OPTIONS

-  **Direct Mount**
(8-45t, made to order, 45-95t, as standard)
-  **Universal Arms**
(8-45t, as standard)

GET OPTIONS

-  **Bolt on Edge**
(8-25t)
-  **Weld on Edge**
(8-25t)
-  **Bolt on Light Duty Teeth**
(8-10t)
-  **Weld on Heavy Duty Teeth**
(8-95t)
-  **Weld on Rock Teeth**
(45-95t)

SCOOP

Suitable for machines from 8-25t

The precision-engineered scoop bucket has been designed to cut through the ground with minimal resistance and drag to release the full potential in terms of digging power and bucket capacity. With inset pins, the bucket - when combined with a coupler for increased versatility to change work tools - can uniquely achieve the same results as directly mounting a bucket.



Innovative Scoop Mounting

Integrated bucket pins reduce the pin to point dimension, allowing for more materials to be dug, faster and with improved machine cycles.

Superior Design

Ensures 100% bucket fill with a self-fill action achieved. The unique deep profile gives an increased payload.

Fuel Saving

Achieving superior performance, allows operators to reduce fuel usage, whilst making carbon savings.

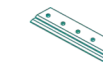
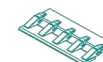

RECOMMENDED USE

- **Low abrasive excavation**
- **Muckshift, overburden removal and land clearance.**

MOUNTING OPTIONS

-  **Scoop Mount**
(8-25t, as standard)

GET OPTIONS

-  **Bolt on Edge**
(8-25t)
-  **Weld on Edge**
(8-25t, made to order)
-  **Weld on Heavy Duty Teeth**
(8-25t)

ENHANCED PERFORMANCE

WITH PRECISION POWER

 Breakout Force Optimisation

 Achieves Fuel Savings

 12 Month Warranty*
*T&C's apply

HEAVY DUTY TRENCH

Suitable for machines from 8-45t

A narrow version of Miller's heavy duty digging bucket, the trench bucket is ideal for jobs that require accurate widths while digging, allowing operators to achieve accuracy saving both time and money.




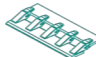

RECOMMENDED USE

- Low abrasive excavation
- Narrow channeling, cabling, pipeworks

MOUNTING OPTIONS

-  Direct Mount (8-45t, made to order)
-  Universal Arms (8-45t, as standard)

GET OPTIONS

-  Bolt on Edge (8-25t)
-  Weld on Edge (8-25t)
-  Weld on Heavy Duty Teeth (8-45t, as standard)

Precision Digging

Accurate trench width can be achieved with ease for consistent work, reducing the need for additional shaping or grading.

Improved Material Flow

With a dual radius design enabling large fill capacities, the bucket does not drag, further minimising maintenance requirements.

Material Savings

Significant material reduction – and cost savings – with the elimination of materials required to reinstate surfaces.

DITCH CLEANING

Suitable for machines from 8-45t



Purposely designed for general clean-up operations, Miller's ditch cleaning bucket is a wider bucket with a shorter tip radius designed to increase productivity, enabling the excavator to reach its maximum distance.



RECOMMENDED USE

- Low abrasive excavation
- Cleaning wide trenches, loading materials, grading, dressing slopes

MOUNTING OPTIONS

-  Direct Mount (8-45t, made to order)
-  Universal Arms (8-45t, as standard)

GET OPTIONS

-  Bolt on Edge (8-45t)
- Available without GET, if required

Enhanced Bucket Shape

The single radius design coupled with a flat floor base and straight sides allow operators to very easily create a flat surface.

Central Reinforced Rib

Engineered using the highest grades of steel, the central rib gives the bucket added strength and rigidity.


High Performance

With the ability to cut through material quicker, the bucket delivers increased productivity delivering fuel savings.



ENGINEERED FOR TOUGH TERRAINS

 Built to Perform and Last

 Robust, Wear Resistant Build

 12 Month Warranty*
*T&C's apply

ROCK Suitable for machines from 14-95t

With optimised wear protection, Miller's rock buckets have been designed to perform, and built to last, in a more aggressive environment. As an all-round tougher bucket with reinforced armour, the rock buckets deliver maximum digging efficiency.



Reinforced Design

The unique dual radius design - with large fill capacity capabilities - allows increased fill capacity with zero tail drag.

Increased Strength

Reinforced with optimised thickness and grades of steel in additional high wear areas, increases performance, whilst extending the lifespan of the bucket.

Optimal Performance

With minimal resistance when cutting through the ground - and maximum breakout force achieved - this delivers optimal digging power.

RECOMMENDED USE



Medium abrasive excavation



Light quarry use, post crusher

MOUNTING OPTIONS



Direct Mount (14-45t, made to order, 45t+, as standard)



Universal Arms (14-45t, as standard)

GET OPTIONS



Weld on Heavy Duty Teeth (14-45t, as standard)



Weld on Rock Teeth (45-95t, as standard)

Scan Me



For technical specifications, send an enquiry with your requirements. Visit www.millergroundbreaking.com.

EXTREME ROCK Suitable for machines from 14-95t

Built to perform in the most aggressive environments, Miller's extreme rock bucket is armoured with additional wear parts, designed to protect the integrity of the core of the bucket itself.



Increased Capacity

The dual radius design allows operators to handle larger loads, increasing productivity through reducing the number of required cycles.

Enhanced Protection

Robust wear protection - using the highest-grade steel in the right places for optimised weight savings - delivers the highest abrasion resistance possible.

Higher Machine Efficiency

Capability to achieve maximum breakout force and withstand the full force of machines.

RECOMMENDED USE



High abrasive excavation



General quarry use, loading at the face

MOUNTING OPTIONS



Direct Mount (14-45t, made to order, 45-95t, as standard)



Universal Arms (14-45t, as standard)

GET OPTIONS



Weld on Heavy Duty Teeth (14-45t, as standard)



Weld on Rock Teeth (45-95t, as standard)

Scan Me



For technical specifications, send an enquiry with your requirements. Visit www.millergroundbreaking.com.



ATTACHMENT RANGE

DESIGNED TO DELIVER:

Durability

Performance

High Impact

Efficiency

HIGH IMPACT FOR MAXIMUM PERFORMANCE

RIPPERS Suitable for machines from 1-50t

Made from high-tensile steel - reinforced in high wear areas - and equipped with a durable and replaceable ripper tooth, Miller's high-impact ripper delivers unmatched reliability and performance.



Extreme Performance

Built with heat-treated steel to withstand the highest levels of mechanical stress, allowing operators to cut through the ground with ease.

Maximum Strength

Built to withstand the most demanding environments due to the reinforced steel in high wear areas delivering maximum strength.

Longer Operational Time

The optimal wear material ratio of the replaceable ripper tooth prolongs the lifespan, reducing downtimes and operational costs.

RECOMMENDED USE



Ripping through hard soil, frozen ground, rock and other challenging materials.

MOUNTING OPTIONS



Direct Mount
(45-50t, as standard)



Universal Arms
(1-45t, as standard)

GET OPTIONS



Ripper Tooth
(1-50t, as standard)

MATCH WORK TOOLS

TO YOUR MACHINES

Select the work tools to suit your models using the table below.

Simply select your machine model, find attachments that are suitable for them and find the relevant page number which contains further information.

SUNWARD

SUNWARD MACHINE		COMPATIBLE WORKTOOLS															
Machine Model	Machine Weight	GTS Quick Coupler	GTX Quick Coupler	Powerlatch Quick Coupler	GTT Tilt Coupler	Powerlatch Tilt Coupler	Manual Coupler	Compact Buckets	Digging Bucket	Scoop Bucket	Ditch Cleaning Bucket	Trench Bucket	Ready to Dig Bundle	Rock Bucket	Extreme Rock Bucket	High Impact Ripper	Page No.
SWE08F	1t						✓	✓								✓	30
SWE17F/SWE18UF/ SWE20F/SWE20FED	1.78/1.88/ 1.94/1.92t	✓			✓		✓	✓					✓			✓	31
SWE25UF/SWE25F	2.75t	✓			✓		✓	✓					✓			✓	32
SWE35UF	3.75/3.85t	✓			✓		✓	✓					✓				33
SWE50UF/SWE60UF	5.35/6t	✓			✓		✓	✓					✓			✓	34
SWE90F	8.75t		✓				✓		✓	✓	✓	✓	✓			✓	35
SWE155F/SWE155FW/ SWE155UF	14.7/15/17t		✓						✓	✓	✓	✓	✓	✓	✓	✓	36
SWE215F	21.8t		✓						✓	✓	✓	✓		✓	✓	✓	37
SWE240FE	23t			✓					✓	✓	✓	✓		✓	✓		38
SWE335F	33.6t			✓					✓	✓	✓	✓		✓	✓		39

SWE08F

Net Power
7.2kW

Operating Weight
1t / 1,010kg

Dig Depth
1,450mm



SWE17F/SWE18UF/ SWE20F/SWE20FED

Net Power
17F/18UF/20F: 13.4kW
20FED: 10kW

Operating Weight
17F: 1.78t / 1,780kg 20F: 1.94t / 1,940kg
18UF: 1.88t / 1,880kg 20FED: 1.92t / 1,920kg

Dig Depth
17F: 2,060mm 20F: 2,380mm
18UF: 2,390mm 20FED: 2,380mm



ATTACHMENT CHOICE

*Guides below are based on buckets being supplied with hydraulic couplers.

Coupler Type	Coupler Mass	Pin Diameter	Vertical Offset	Min Pickup Width	Jaw Width	Pin Pickup Range
Manual Coupler	11kg	25mm	89mm	N/A	94mm	90mm

Bucket Type	Width	Capacity	Weight	Tip Radius	GET/Bolt Qty	Front Pin Dia.	Rear Pin Dia.	Pin Centre
Digging (Bolt on Teeth)	250mm	0.012m ³	30kg	420mm	2	25mm	25mm	90mm
	450mm	0.025m ³	42kg		3			
Ditching (BOE)	900mm	0.035m ³	57kg	324mm	6	25mm	25mm	90mm

Buckets include: Loose, non-hardened steel pins

Attachment Type	Weight
High-impact Ripper	27kg

ATTACHMENT CHOICE

*Guides below are based on buckets being supplied with hydraulic couplers.

Coupler Type	Coupler Mass	Pin Diameter	Vertical Offset	Min Pickup Width	Jaw Width	Pin Pickup Range
GTS Quick Coupler	22kg	30mm	116mm	104mm	103mm	121-165mm
Manual Coupler	17kg	30mm	103mm	N/A	102mm	165mm

Bucket Type	Width	Capacity	Weight	Tip Radius	GET/Bolt Qty	Front Pin Dia.	Rear Pin Dia.	Pin Centre
Digging (Weld on Teeth)	300mm	0.024m ³	38kg	508mm	3	30mm	30mm	165mm
	500mm	0.045m ³	52kg		4			
Ditching (BOE)	1000mm	0.056m ³	73kg	364mm	7	30mm	30mm	165mm
Tilt (BOE)	900mm	0.071m ³	138kg	633mm	6	30mm	30mm	165mm

Buckets include: Loose, non-hardened steel pins

Ready to Dig	Bucket Type	Width	Capacity	Weight	GET Type
0A/0B GTS Quick Coupler	Trench	300mm	0.024m ³	38kg	BOE
	Digging	500mm	0.045m ³	52kg	Toothed (4)
	Ditching	1000mm	0.056m ³	73kg	BOE

Attachment Type	Weight
High-impact Ripper	27kg

SWE25UF/ SWE25F

Net Power
15.4kW

Operating Weight
2.75t / 2,750kg

Dig Depth
2,800mm



SWE35UF

Net Power
18.2kW

Operating Weight
3.75t - 3.85t / 3,750kg - 3,850kg

Dig Depth
3,320mm



ATTACHMENT CHOICE

*Guides below are based on buckets being supplied with hydraulic couplers.

Coupler Type	Coupler Mass	Pin Diameter	Vertical Offset	Min Pickup Width	Jaw Width	Pin Pickup Range
GTS Quick Coupler	29kg	35mm	135mm	118mm	117mm	160-200mm
Manual Coupler	22kg	35mm	117mm	N/A	112mm	137mm

Bucket Type	Width	Capacity	Weight	Tip Radius	GET/Bolt Qty	Front Pin Dia.	Rear Pin Dia.	Pin Centre
Digging (Weld on Teeth)	300mm	0.033m ³	49kg	584mm	3	35mm	35mm	137mm
	600mm	0.077m ³	75kg		5			
Ditching (BOE)	1200mm	0.120m ³	113kg	470mm	8	35mm	35mm	137mm
Tilt (BOE)	1100mm	0.132m ³	186mm	723mm	7	35mm	35mm	137mm

Buckets include: Loose, non-hardened steel pins

Ready to Dig	Bucket Type	Width	Capacity	Weight	GET Type
1B02 GTS Quick Coupler	Trench	300mm	0.033m ³	49kg	BOE
	Digging	600mm	0.077m ³	75kg	Toothed (5)
	Ditching	1200mm	0.120m ³	113kg	BOE

Attachment Type	Weight
High-impact Ripper	35kg

ATTACHMENT CHOICE

*Guides below are based on buckets being supplied with hydraulic couplers.

Coupler Type	Coupler Mass	Pin Diameter	Vertical Offset	Min Pickup Width	Jaw Width	Pin Pickup Range
GTS Quick Coupler	29kg	35mm	135mm	145mm	144mm	160-200mm
Manual Coupler	34kg	35mm	135mm	N/A	141mm	195mm

Bucket Type	Width	Capacity	Weight	Tip Radius	GET/Bolt Qty	Front Pin Dia.	Rear Pin Dia.	Pin Centre
Digging (Weld on Teeth)	300mm	0.044m ³	72kg	693mm	2	35mm	35mm	195mm
	750mm	0.138m ³	129kg		5			
Ditching (BOE)	1200mm	0.160m ³	152kg	539mm	8	35mm	35mm	195mm
Tilt (BOE)	1200mm	0.174m ³	273kg	819mm	8	35mm	35mm	195mm

Buckets include: Loose, non-hardened steel pins

Ready to Dig	Bucket Type	Width	Capacity	Weight	GET Type
1B02 GTS Quick Coupler	Trench	300mm	0.044m ³	72kg	BOE
	Digging	750mm	0.138m ³	129kg	Toothed (5)
	Ditching	1200mm	0.160m ³	152kg	BOE

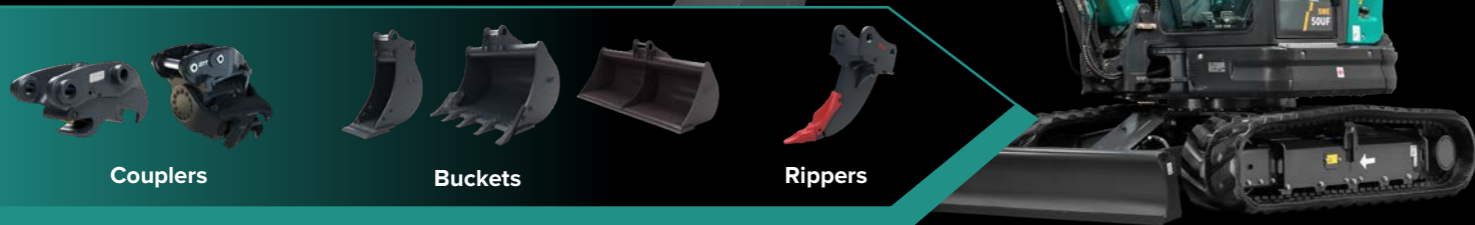
Attachment Type	Weight
High-impact Ripper	64kg

SWE50UF/SWE60UF

Net Power
50UF: 29.7kW
60UF: 35kW

Operating Weight
50UF: 5.35t / 5,350kg
60UF: 6t / 6,000kg

Dig Depth
50UF: 3,375mm
60UF: 3,700mm



Couplers

Buckets

Rippers

ATTACHMENT CHOICE

*Guides below are based on buckets being supplied with hydraulic couplers.

Coupler Type	Coupler Mass	Pin Diameter	Vertical Offset	Min Pickup Width	Jaw Width	Pin Pickup Range
GTS Quick Coupler	56kg	45mm	130mm	145mm	144mm	220-285mm
Manual Coupler	52kg	45mm	162mm	N/A	152mm	260mm

Bucket Type	Width	Capacity	Weight	Tip Radius	GET/Bolt Qty	Front Pin Dia.	Rear Pin Dia.	Pin Centre
Digging (Weld on Teeth)	300mm	0.056m ³	96kg	756mm	2	45mm	45mm	260mm
	900mm	0.220m ³	174kg		5			
Ditching (BOE)	1500mm	0.247m ³	219kg	576mm	10	45mm	45mm	260mm
Tilt (BOE)	1500mm	0.32m ³	419kg	938mm	10	45mm	45mm	260mm

Buckets include: Loose, non-hardened steel pins

Ready to Dig	Bucket Type	Width	Capacity	Weight	GET Type
2A GTS Quick Coupler	Trench	300mm	0.056m ³	96kg	BOE
	Digging	900mm	0.220m ³	174kg	Toothed (5)
	Ditching	1500mm	0.247m ³	219kg	BOE

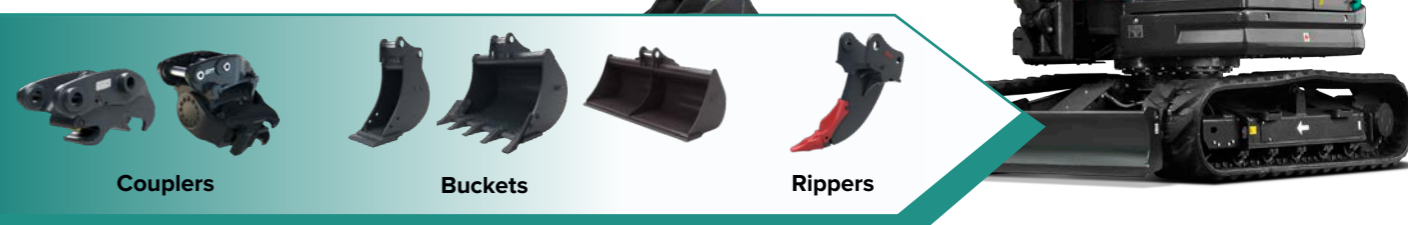
Attachment Type	Weight
High-impact Ripper	102kg

SWE90UF

Net Power
46.2 kW

Operating Weight
8.75t / 8,750kg

Dig Depth
4,545mm



Couplers

Buckets

Rippers

ATTACHMENT CHOICE

*Guides below are based on buckets being supplied with hydraulic couplers.

Coupler Type	Coupler Mass	Pin Diameter	Vertical Offset	Min Pickup Width	Jaw Width	Pin Pickup Range
GTX Quick Coupler	92kg	55mm	187mm	165mm	164mm	273-312mm 290-315mm
Manual Coupler	97kg	55mm	190mm	N/A	196mm	310mm

Bucket Type	Width	Capacity	Weight	Tip Radius	GET/Bolt Qty	Front Pin Dia.	Rear Pin Dia.	Pin Centre
Digging (Weld on Teeth)	450mm	0.16m ³	194kg	953mm	3	55mm	55mm	310mm
	900mm	0.4m ³	274kg		5			
Ditching (BOE)	1524mm	0.38m ³	261kg	671mm	5	55mm	55mm	310mm
Tilt (BOE)	1500mm	0.37m ³	388kg	978mm	10	55mm	55mm	310mm

Buckets include: Loose, non-hardened steel pins

Ready to Dig	Bucket Type	Width	Capacity	Weight	GET Type
Range 3 GTX Quick Coupler	Trench	450mm	0.16m ³	194kg	BOE
	Digging	900mm	0.4m ³	274kg	Toothed (5)
	Ditching	1524mm	0.38m ³	261kg	BOE

Attachment Type	Weight
High-impact Ripper	179kg

SWE155F/SWE155FW/ SWE155UF

Net Power

155F/155UF: 90kW
155FW: 115kW

Operating Weight

155F: 14.7t / 14,700kg
155FW: 14.7-15.4t / 14,700-15,400kg
155UF: 17t / 17,000kg

Dig Depth

155F: 5,530mm
155UF: 5,600mm
155FW: 5,100mm



Couplers

Buckets

Rippers

ATTACHMENT CHOICE

*Guides below are based on buckets being supplied with hydraulic couplers.

Coupler Type	Coupler Mass	Pin Diameter	Vertical Offset	Min Pickup Width	Jaw Width	Pin Pickup Range
GTX Quick Coupler	186kg	60-65mm	224mm	217mm	216mm	60: 345-415mm 65: 355-420mm

Coupler includes: Pressure switch kit

Bucket Type	Width	Capacity	Weight	Tip Radius	GET/Bolt Qty	Front Pin Dia.	Rear Pin Dia.	Pin Centre
Digging (Weld on Teeth)	600mm	0.31m ³	355kg	1181mm	3	65mm	65mm	410mm
	1100mm	0.63m ³	515kg		4			
Ditching (BOE)	1829mm	0.61m ³	530kg	786mm	9	65mm	65mm	410mm
Rock	Application specific. Please get in touch for more details.							
Extreme Rock	Application specific. Please get in touch for more details.							

Ready to Dig	Bucket Type	Width	Capacity	Weight	GET Type
Range 4 GTX Quick Coupler	Trench	600mm	0.31m ³	355kg	BOE
	Digging	1100mm	0.63m ³	515kg	Toothed (4)
	Ditching	1829mm	0.61m ³	530kg	BOE

Attachment Type	Weight
High-impact Ripper	302kg

SWE215F

Net Power

129kW

Operating Weight

21.8t / 21,800kg

Dig Depth

6,635mm



Couplers

Buckets

Rippers

ATTACHMENT CHOICE

*Guides below are based on buckets being supplied with hydraulic couplers.

Coupler Type	Coupler Mass	Pin Diameter	Vertical Offset	Min Pickup Width	Jaw Width	Pin Pickup Range
GTX Quick Coupler	330kg	80mm	207mm	303mm	302mm	430-520mm

Coupler includes: Pressure switch kit

Bucket Type	Width	Capacity	Weight	Tip Radius	GET/Bolt Qty	Front Pin Dia.	Rear Pin Dia.	Pin Centre
Digging (Weld on Teeth)	600mm	0.45m ³	605kg	1459mm	3	80mm	80mm	475mm
	1350mm	1.25m ³	920kg		5			
Ditching (BOE)	2134mm	1.07m ³	750kg	1024mm	10	80mm	80mm	475mm
Rock	Application specific. Please get in touch for more details.							
Extreme Rock	Application specific. Please get in touch for more details.							

Ready to Dig	Bucket Type	Width	Capacity	Weight	GET Type
Range 4 GTX Quick Coupler	Trench	600mm	0.45m ³	605kg	BOE
	Digging	1350mm	1.25m ³	920kg	Toothed (4)
	Ditching	2134mm	1.07m ³	760kg	BOE

Attachment Type	Weight
High-impact Ripper	625kg

SWE240FED

Net Power
132kW

Operating Weight
23t / 23,360kg

Dig Depth
6,750mm



Couplers

Buckets

Rippers

ATTACHMENT CHOICE

*Guides below are based on buckets being supplied with hydraulic couplers.

Coupler Type	Coupler Mass	Pin Diameter	Vertical Offset	Min Pickup Width	Jaw Width	Pin Pickup Range
Mix Match Powerlatch	370kg	80mm	320mm	303mm	302mm	430-520mm

Bucket Type	Width	Capacity	Weight	Tip Radius	GET/Bolt Qty	Front Pin Dia.	Rear Pin Dia.	Pin Centre
Digging (Weld on Teeth)	600mm	0.45m ³	605kg	1459mm	3	80mm	80mm	475mm
	1350mm	1.25m ³	920kg		5			
Ditching (BOE)	2134mm	1.07m ³	750kg	1024mm	10	80mm	80mm	475mm
Rock	Application specific. Please get in touch for more details.							
Extreme Rock	Application specific. Please get in touch for more details.							

Buckets include: Loose, non-hardened steel pins

Attachment Type	Weight
High-impact Ripper	Application specific. Please get in touch for more details.

SWE335F

Net Power
209kW

Operating Weight
33.6t / 33,600kg

Dig Depth
7,010mm



Couplers

Buckets

Rippers

ATTACHMENT CHOICE

*Guides below are based on buckets being supplied with hydraulic couplers.

Coupler Type	Coupler Mass	Pin Diameter	Vertical Offset	Min Pickup Width	Jaw Width	Pin Pickup Range
Mix Match Powerlatch	705kg	90/100mm	430mm	343mm	340mm	90: 482-602mm 100: 500-607mm

Bucket Type	Width	Capacity	Weight	Tip Radius	GET/Bolt Qty	Front Pin Dia.	Rear Pin Dia.	Pin Centre
Digging (Weld on Teeth)	1750mm	2.34m ³	2105kg	1700mm	6	90mm	900mm	550mm
	2743mm	2.06m ³	1545kg					
Ditching (BOE)	2743mm	2.06m ³	1545kg	1165mm	10	90mm	900mm	550mm
Rock	Application specific. Please get in touch for more details.							
Extreme Rock	Application specific. Please get in touch for more details.							

Buckets include: Loose, non-hardened steel pins

Attachment Type	Weight
High-impact Ripper	Application specific. Please get in touch for more details.



CUSTOMER TESTIMONIAL



“Miller’s Ready to Dig bundles ensure we always have the attachments our customers need in stock, so they can get the most from their machines without delay. The smart packaging makes ordering simple and efficient, helping customers get to work quickly with everything ready to go.”



Joseph Bayton, Managing Director at Hamstead Plant.



CUSTOMER SUPPORT

DESIGNED TO DELIVER:



Global Tech Support



Quick Responses



Fast Turnaround



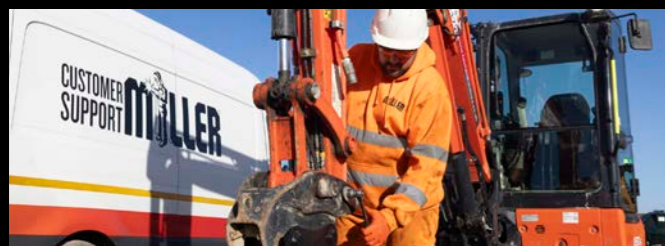
High Safety Standards



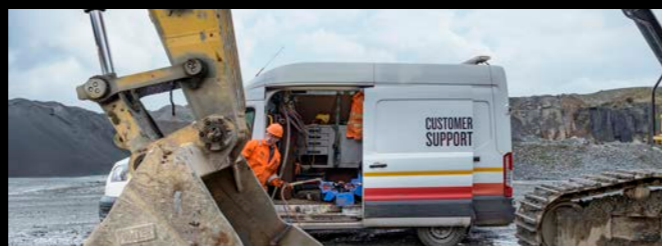
PEACE OF MIND GUARANTEED

Miller prides itself on having dedicated customer service teams to support our customers with every part of the journey of their Miller product's lifecycle. Our sales and customer service team will liaise with you to advise on product selection, ensuring you receive a fast turnaround of your equipment meeting your needs.

OUR SUPPORT SERVICES



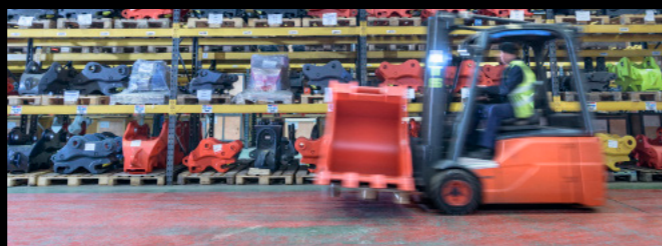
Our highly skilled technical field service engineers are fully equipped to attend any sites to install equipment, safely, whilst meeting our high-quality standards. We work around the needs of our customers businesses to ensure we can get new equipment up and running swiftly.



Delivering our products to over 50+ countries, we have an international hub of dedicated field response teams. Miller's field service ensures your plant equipment stays operational with nationwide emergency and planned responses available seven days a week. Our skilled technicians provide on-site troubleshooting and permanent solutions.



With so many advantages to our couplers, we are passionate to support our customers in being able to communicate these most effectively, ultimately to generate more sales of our customers machines. As such, we can provide technical product training, offering additional support when or if required.



Across the globe, we have strategically located warehouses housing spare parts, should an issue occur. We understand the importance in minimising downtime and, should a spare part be required, we ensure that we send parts as soon as possible.

mi HOW TO ORDER

Ordering is straightforward for Sunward customers.

Contact your local dealer:


Scan the QR code below to find your local dealer or visit www.sunward.eu


Scan Me



Require further assistance?

Contact your Sunward Regional Business Manager for further support or call Sunward on:

 +32 (0) 11 43 46 66

 info.eu@sunward.cc

 www.sunward.eu





PRODUCT GUIDE

CONTACT US



MILLER UK

Bassington Lane,
Bassington Industrial Estate,
NE23 8AD

T: +44 (0) 1670 707 272

E: info@miller-int.com



MILLER CHINA

Yaojiafang Town,
Economic Development Zone,
Zhangjiakou, Hebei.
PC075312

T: +86 150 3360 6002

E: info@miller-int.com



MILLER AMERICA

Delaware,
Ohio,
USA, 43015

T: +1 309 573 3744

E: info@miller-int.com.au



MILLER INDIA

B-378/1-2,
PID 11-161-B-278/1-2,
Ward No 38, 1st Block,
KIADB Ring Road, Bangalore,
560059

T: +91 988 647 0605

E: india@miller-int.com



MILLER AUSTRALIA

14 Lillie Crescent,
Tullamarine,
Victoria, 3043

T: +61 417 537 387

E: info@miller-int.com.au

Visit our
website:

